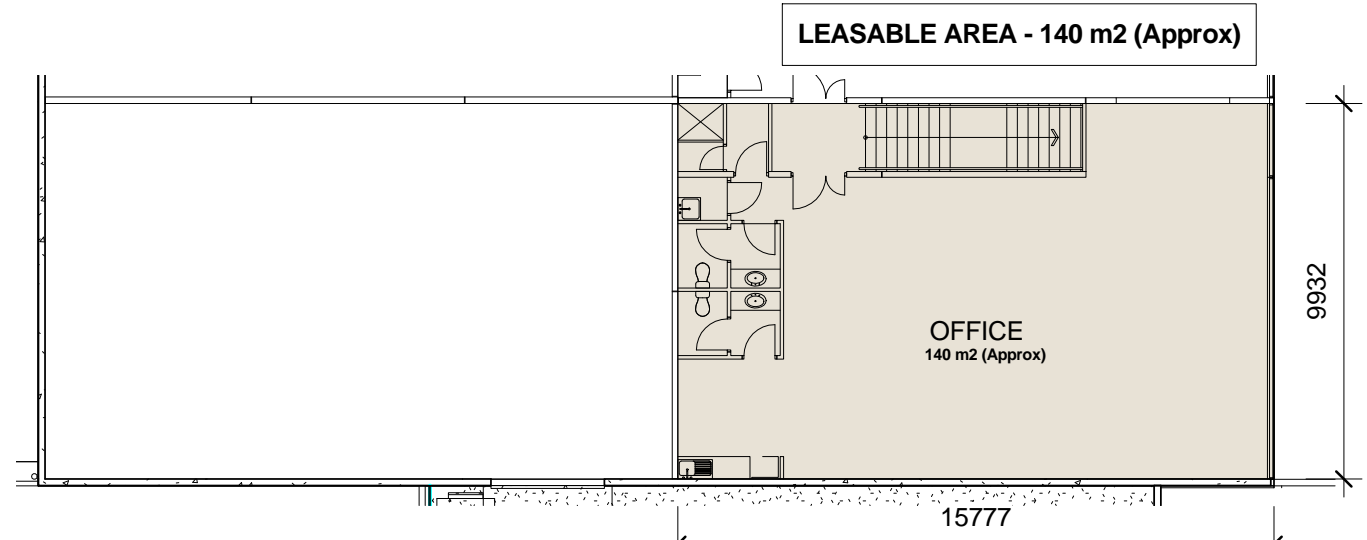
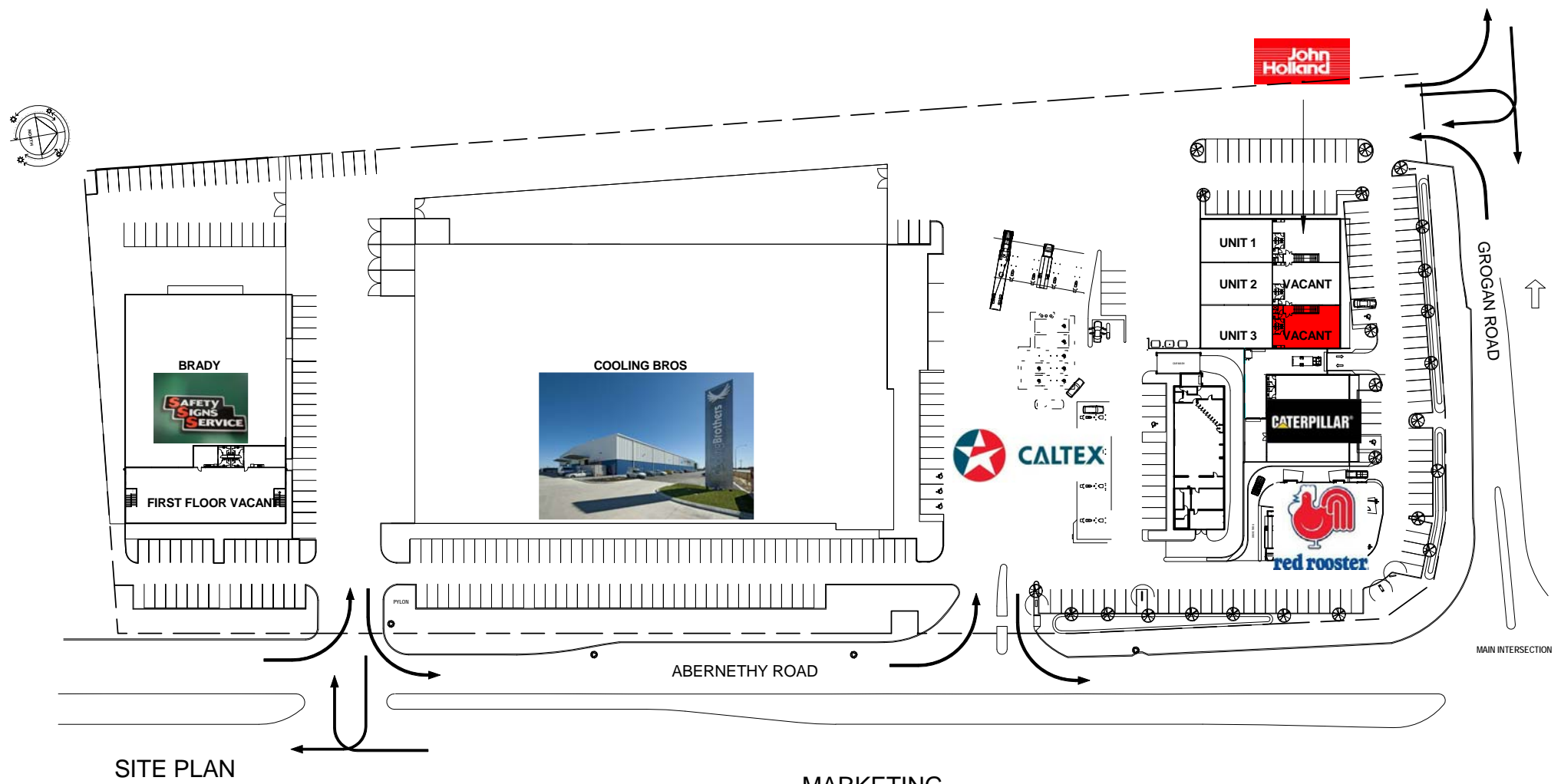


FITOUT - ILLUSTRATION PURPOSES ONLY
AERIAL / LOCATION PLAN



2 Unit 3A_F Floor Office
1:200 @ A3
1:100 @ A1

PERTH INTERNATIONAL AIRPORT
PERTH CITY - 20 KMS
969 ABERNETHY ROAD



KEY FEATURES OF THE PROPERTY

- OFFICE UNITS AVAILABLE
- AMPLE ON SITE PARKING (TOTAL LOT 100-330 PARKING BAYS)
- MODERN COMMERCIAL / INDUSTRIAL COMPLEX
- PRIME CORNER LOCATION WITH EXCELLENT EXPOSURE.
- APPROXIMATELY 38,700 VEHICLES PASS THE SITE WEEKLY.

COXON GROUP OF COMPANIES

Waypoint
SUITE 7
KEWDALE CENTRAL
137 KEWDALE ROAD
KEWDALE WA 6105
TEL: (08) 9353 2188
FAX: (08) 9381 2199
EMAIL: admin@coxongroup.com.au

Date 26/05/2011
Drawn by VB
Checked by DHZ
Project number

CLIENT/TENANT UNIT 3a_FIRST FLOOR PLAN

LOT 100-969 ABERNETHY ROAD, HIGH WYCOMBE

WAYPOINT BUSINESS PARK

REV.	REVISION DESCRIPTION	DATE	ISS. BY	CHK
	THE COXON GROUP RETAINS COPYRIGHT OF THIS DRAWING AS INDICATED	Scale as indicated	Rev.	Sheet.
	NOT FOR CONSTRUCTION CONTRACTORS CHECK ALL MEASUREMENTS ON SITE	NTS - A4 Sheet		
			M03	