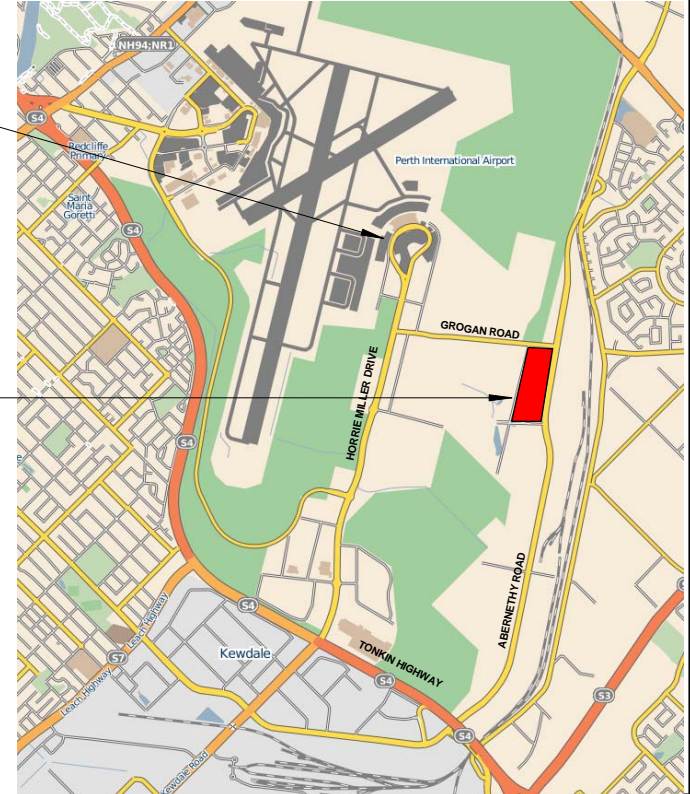


AERIAL / LOCATION PLAN



Position your business in first class
Waypoint Business Park - Abernethy Road Forresterfield

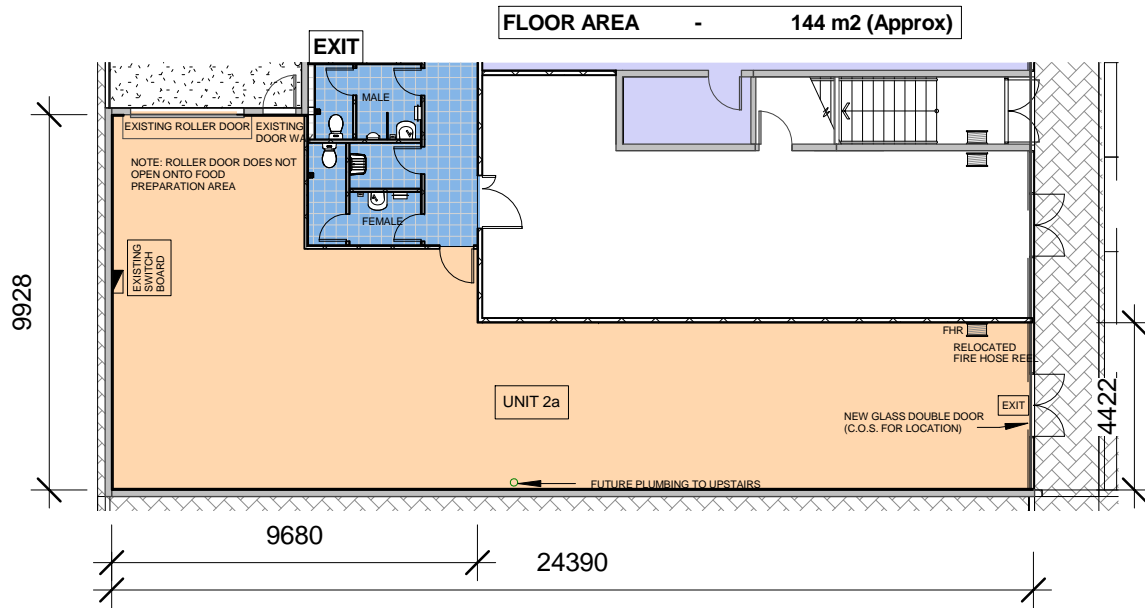


PERTH INTERNATIONAL AIRPORT
PERTH CITY - 20 KMS
967 ABERNETHY ROAD



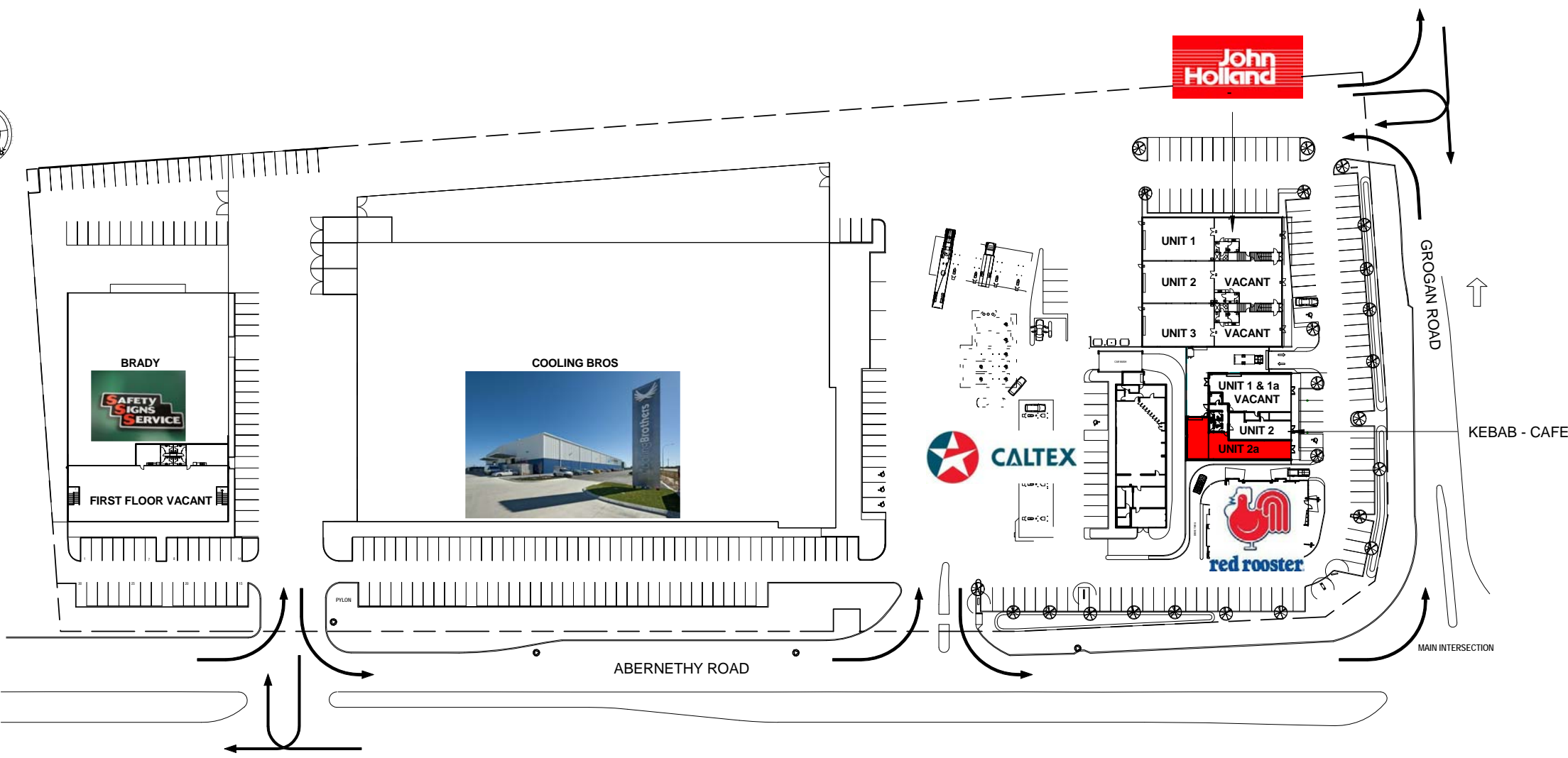
KEY FEATURES OF THE PROPERTY

- FAST FOOD RETAIL UNITS AVAILABLE
- AMPLE ON SITE PARKING - (TOTAL LOT 100-330 PARKING BAYS)
- MODERN COMMERCIAL / INDUSTRIAL COMPLEX
- PRIME CORNER LOCATION WITH EXCELLENT EXPOSURE.
- APPROXIMATELY 38,700 VEHICLES PASS THE SITE WEEKLY.



Unit 2a
1: 200 @ A3
1: 100 @ A1

1



SITE PLAN

MARKETING

COXON GROUP OF COMPANIES Waypoint	SUITE 7 KEWDALE CENTRAL 117 KEWDALE ROAD KEWDALE WA 6105 TEL: (08) 9353 2188 FAX: (08) 9381 2199 EMAIL: admin@coxongroup.com.au		Date	26/05/2011	Drawn by	VB	CLIENT/TENANT UNIT 2a_FLOOR PLAN LOT 100 - 967 ABERNETHY ROAD, HIGH WYCOMBE	WAYPOINT BUSINESS PARK	FITOUT ILLUSTRATION PURPOSE ONLY THE COXON GROUP RETAINS COPYRIGHT OF THIS DRAWING Scale As indicated NTS - A4 Rev. Sheet. A3 NOT FOR CONSTRUCTION CONTRACTORS CHECK ALL MEASUREMENTS ONSITE(SUBJECT TO SURVEY) M02
			Project number		Checked by	CL			

25/07/2011 2:57:44 PM